

## PowerFlex Rope

C2100 – 100ft Detachable Rope  
C2150 – 150ft Detachable Rope  
C2110 – 110ft Detachable Rope  
C2000 – Power Flex Custom w/Tab

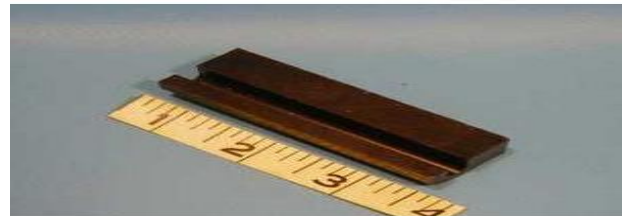
C2125 – 125ft Detachable Rope  
C1252 – Power Flex custom  
C2090 – 90ft Detachable Rope

## TG Sliders

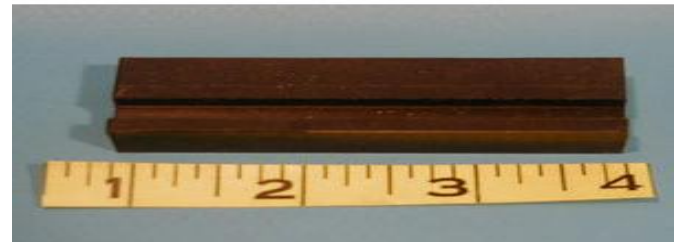
A0261 - Pre 403 TG Slider w/L  
bracket. Slider in middle of wheel  
assembly. picture below  
M0365 – Slider Only



M3955 – RHG metal and Screw  
down slider (Pre403) picture below



M3956 – RVG slider (Pre 403) picture  
below



A1686 – Pre 403 TG wire on slider  
w/150 ft rope attached (Set) This is to  
retro pre detachable top track units.  
picutre below

A1154 – Pre 403 TG wire on Slider and  
Bracket. picture below



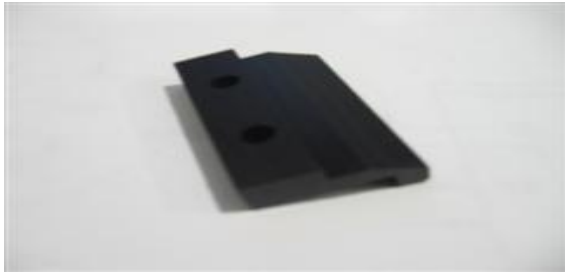
M9730 – 403 RHG Slider (Detachable  
rope) picture below



M9670 – 403 TG Stop Block/Slider  
1" x ½" x 2 ¼". (Used with detachable  
rope wheel assembly) picture below



M9228 – 403/308/805 RHG/RVG stop block/slider



M9886 – 403/805 TG Slider in front. All TG after 4-03 picture



## UG Sliders

A1100 – 403 UG Detachable Slider Black (Set)

A1103 – 403 UG Detachable Left

A0844 – 403 UG Detachable Right

picture below



A1153 – Pre 403 UG Retro Detachable Slider White (Set)

A1151 – Pre403 UG Retro Detachable Left

A1152 – Pre 403 UG Retro Detachable Right

picture below



M3973 – 801 UG Slider fits only 801 track. picture below



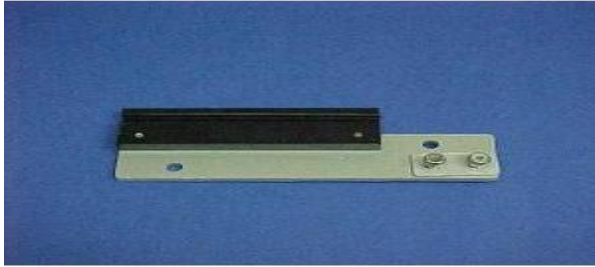
A0361 – UG Slider Rope Repair w/wire (Pre 801/403) picture below



A0081 – UG slider w/paddle pre 403 left. picture below

A0082 – UG Slider w/paddle pre 403 right.

M0364 – UG slider only pre 403



M3711 – Pre 403 UG wire on slider (Older Ft. Wayne LE) This fits pre 801 track with a drop down channel that is lower then the rest of the track. picture below

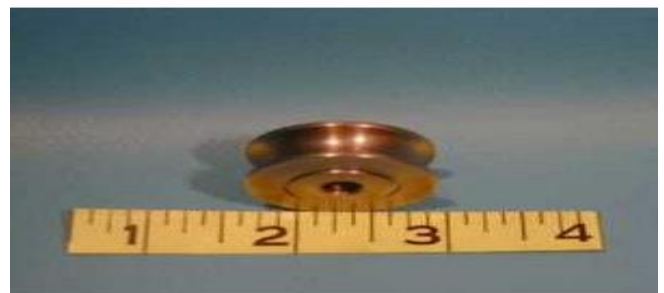


## Pulleys

H1070 – Standard Pulley .250 picture below



H1104 Heavy Duty Pulley .250 maxi-torque for heavy duty systems picture below



H9678 – Eclipse SS 2" Pulley picture to right



## Top Guide Pulley End Caps

A2423 – TG SS Pulley End Cap  
(Replaces A0886)

picture below



A0886 – TG Pulley End Cap.  
(Replacced with A2423 to right)

picture below of old style



A2141 - RHG Pulley Endcap Gray (Set)

A2137 – RHG Pulley Endcap Gray (L)

A2138 – RHG Pulley Endcap Gray (R)

picture to right

A2142 – RHG Pulley Endcap Tan (Set)

A2139 – RHG Pulley Endcap Tan (L)

A2140 – RHG Pulley Endcap Tan (R)

picture to right

(Track has a small curved flange at the top)



A0581 – 403 RHG –M Pulley  
Endcap Tan (Set) picture to right

A0526 – 403 RHG – M Pulley  
Endcap Gray (Set) picture to right

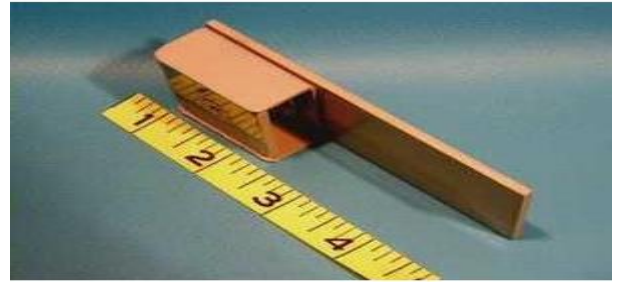
(This track housing is straight up and  
down).



A0532 – RVG – M Pulley Endcap (Gray)

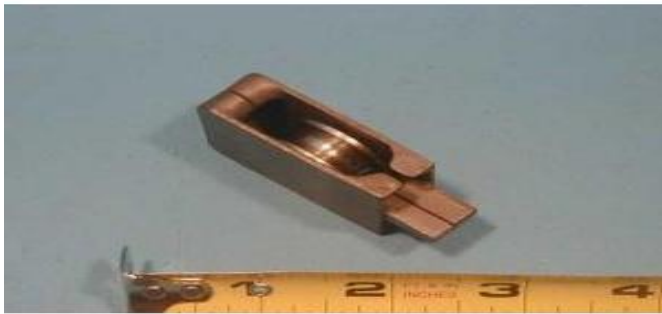
A0584 – RVG – M Pulley Endcap (Tan)

Picture on right



## Uderguide Pulley

A0958 – 403/801 UG Pulley Endcap  
(New Style) picture below

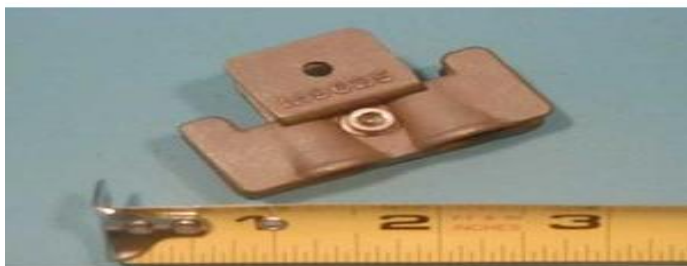


A0022 – UG Pulley Endcap (Old  
Style) picture below



## Guide Feeds

A0996 – 403 UG SS Guide Feed. Does not  
work w/Pre 403 & Pre 801 UG. In those  
cases us A1071 with fork stop and notch  
track. picture below



A1071 – TG SS Guide Feed. Is  
also used with all pre 403 UG.  
When using for ug must use fork  
stop and notch track. picture below



A1061 – RHG –M SS Guide Feed Assembly  
& Stop (w/mounting hard ware) picture  
below



A1062 – RVG-M SS Guide Feed  
Picture below



## Electrical

E1088 – New 3 Wire Motor

E1063 – Rebuilt 3 Wire Motor (check for  
availability)

E1028 – New High Torque 3 Wire Motor

E1028R – Rebuilt High Torque Motor (check for  
availability)

Motor pictures to right



A0605 – Leviton 3 Wire Key Switch

Picture below

E1046 - Key For Leviton Key Switch  
(Set of 2)



A2437 - Touch Pad Complete  
w/Circuit Board Assembly.

Picture below



## **Brackets**

A1932 – Stainless Steel 2 pcs adjustable bracket  
A2393 - Lid Bracket Extension Kit 15-17" (11 3/4" Long) SS  
A2364 - Lid Bracket Extension Kit 17-19" (13 3/4" Long) SS  
A2376 - Lid Bracket Extension Kit 19-21" (15 3/4" Long) SS  
A2365 - Lid Bracket Extension Kit 21-23" (17 3/4" Long) SS  
A2392 - Lid Bracket Extension Kit 23-25" (19 3/4" Long) SS

A2409 – 309 Flush Lid Bracket

A0504 -Lid Bracket Adj. 12" Arm w/7 1/2" Base Walk On (Aluminum Lid)  
A1421 - Lid Bracket Adj. 13" Arm w/7 1/2 " Base Walk On (Stone/Concrete)  
X0511 - Flat Plate Extension For Adjustable Walk On Lid Bracket 16'

M3970 – 5” NME and ME Bracket  
M3806 – 10” NME and ME Bracket

## **Lid Forming System**

A1292 - 403 1 pc. Box Perimeter & Lid Forming Kit 14" Box 20' x 40' (Must order shape kit separately)  
A1293 - 403 1 pc. Lid Form Shape Kit (Cantilever) 20' Guide Space  
A1294 - 403 1 pc. Lid Form Shape Kit (Inclined) 20' Guide Space  
A1498 - Lid Forming Perimeter Encapsulation & Brackets w/Gunite Encapsulation to 24' (Consumables)  
A1419 - Lid Forming Perimeter Encapsulation & Brackets For Variable Lid Thickness (Consumable)  
A1125 - Lid Forming Perimeter Encapsulation & Brackets use w/Bead Encapsulation (Consumable)  
A1968 - Lid Forming Perimeter Encapsulation & Brackets For Variable Lid Thickness VL (Consumable)  
A1367 – 1 Pcs Box Perimeter & Lid Forming 4ft. Extension Gunite  
A1368 – P Pcs Box Perimeter & Lid Forming 4ft Extension V/L