

PowerFlex Rope

C3100 – 100ft Detachable Rope
C3125 – 125ft Detachable Rope
C3150 - 150ft Detachable Rope

C3000 – Custom Length w/tab
C1267 – Custom Length no tab
C3090 – 90 Ft Detachable

SLIDERS

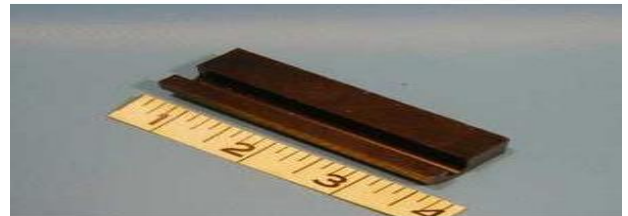
TG Sliders

A0261 - Pre 403 TG Slider w/L bracket. Slider in middle of wheel assembly. picture below

M0365 – Pre 403 TG slider only.



M3955 – RHG metal and Screw down slider (Pre403) picture below



M3956 – RVG slider (Pre 403) picture below



A1686 – Pre 403 TG wire on slider w/150 ft rope attached (Set) This is to retro pre detachable top track units. picture below

A1154 – Pre 403 TG wire on Slider and Bracket. picture below

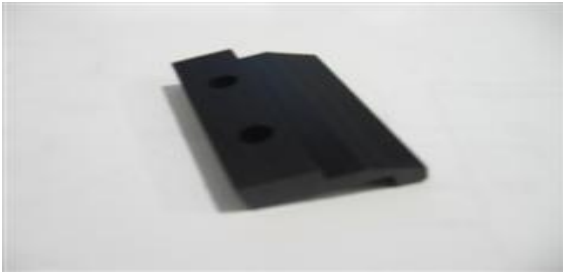


M9670 – 403 TG Stop Block/Slider 1" x ½ x 2 ¼. (Used with detachable rope wheel assembly) picture below

M9730 – 403 RHG Slider (Detachable rope) picture below



M9228 – 403/308/805 RHG/RVG
stop block/slider



M9338 Rear Slider

M9886 – 403/805 TG Slider in
front. All TG after 4-03 below



UG Sliders

A1100 – 403 UG Detachable Slider
Black (Set)

A1103 – 403 UG Detachable Left

A0844 – 403 UG Detachable Right
picture below



A1153 – Pre 403 UG Retro Detachable
Slider White (Set)

A1151 – Pre 403 UG Retro Detachable Left

A1152 – Pre 403 UG Retro Detachable Right
picture below



M0364 – Pre 801 Drop down lip

M3973 – 801 UG Slider fits only
801 track. picture below



A0361 – UG Slider Rope Repair w/wire
(Pre 801/403) picture below



A0081 – UG slider w/paddle pre 403 left. picture below

A0082 – UG Slider w/paddle pre 403 right.

M0364 – UG slider only pre 403



M3711 – Pre 403 UG wire on slider (Older Ft. Wayne LE) This fits pre 801 track with a drop down channel that is lower then the rest of the track. picture below



Pulleys

H1070 – Standard Pulley .250 picture below



H1104 Heavy Duty Pulley .250 maxi-torque for heavy duty systems picture below



H9678 – Eclipse SS 2" Pulley picture to right



Top Guide Pulley End Caps

A2423 – TG SS Pulley End Cap
(Replaces A0886)

picture below



A0697 – Endcap repair kit.
Bottom Plat w/pem stud, Pulley
and nut. (Old style top dome pcs
Discontinued)



A2141 - RHG Pulley Endcap Gray (Set)

A2137 – RHG Pulley Endcap Gray (L)

A2138 – RHG Pulley Endcap Gray (R)

picture to right

A2142 – RHG Pulley Endcap Tan (Set)

A2139 – RHG Pulley Endcap Tan (L)

A2140 – RHG Pulley Endcap Tan (R)

picture to right

(Track has a small curved flange at the top)



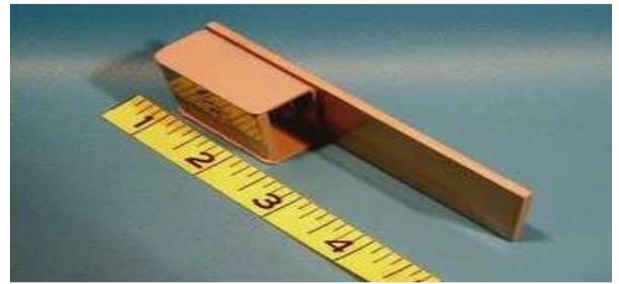
A0581 – 403 RHG –M Pulley
Endcap Tan (Set) picture to right

A0526 – 403 RHG – M Pulley
Endcap Gray (Set) picture to right

(This track housing is straight up and
down).



A0532 – RVG – M Pulley Endcap (Gray)
A0584 – RVG – M Pulley Endcap (Tan)
Picture on right



Uderguide Pulley

A0958 – 403/801 UG Pulley Endcap
(New Style) picture below



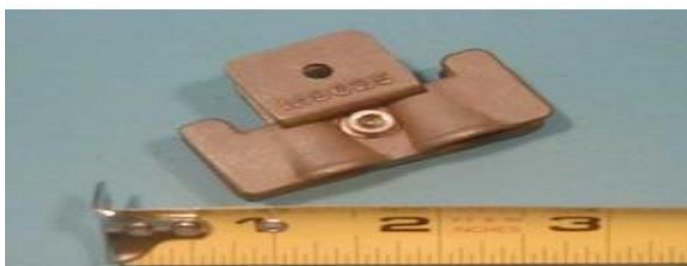
A0198 – Old Style UG for Encap

A0022 – UG Pulley Endcap (Old
Style) picture below



Guide Feeds

A0996 – 403 UG SS Guide Feed. Does not
work w/Pre 403 & Pre 801 UG. In those
cases us A1440 with fork stop and notch
track. picture below



A1440 Pre 801/403 UG Guide
Used with fork stops

A1071 – TG SS Guide Feed.



A1061 – RHG –M SS Guide Feed Assembly
& Stop (w/mounting hard ware) picture
below



A1062 – RVG-M SS Guide Feed
Picture below



Electrical

E1088 – New 3 Wire Motor

E1063 – Rebuilt 3 Wire Motor (check for
availability)

E1028 – New High Torque 3 Wire Motor

E1028R – Rebuilt High Torque Motor (check for
availability)

Motor pictures to right



A0605 – Leviton 3 Wire Key Switch

Picture below

E1046 - Key For Leviton Key Switch

E1975 – Keyswitch Cover Plate &
door.



A2469 - Touch Pad Complete
w/Circuit Board Assembly.

Picture below



Brackets

A1932 – Stainless Steel 2 pcs adjustable bracket
A2393 - Lid Bracket Extension Kit 15-17" (11 3/4" Long) SS
A2364 - Lid Bracket Extension Kit 17-19" (13 3/4" Long) SS
A2376 - Lid Bracket Extension Kit 19-21" (15 3/4" Long) SS
A2365 - Lid Bracket Extension Kit 21-23" (17 3/4" Long) SS
A2392 - Lid Bracket Extension Kit 23-25" (19 3/4" Long) SS

A2409 – 309 Flush Lid Bracket (to make walk on, 1 bracket every 2ft)

A0504 -Lid Bracket Adj. 12" Arm w/7 1/2" Base Walk On (Aluminum Lid)
A1421 - Lid Bracket Adj. 13" Arm w/7 1/2 " Base Walk On (Stone/Concrete)
X0511 - Flat Plate Extension For Adjustable Walk On Lid Bracket 16'

M3970 -5" NME and ME Bracket
M3806 10" NME and ME Bracket
Recommend 3 of each

Lid Forming System

A1292 - 403 1 pc. Box Perimeter & Lid Forming Kit 14" Box 20' x 40' (Must order shape kit separately)
A1293 - 403 1 pc. Lid Form Shape Kit (Cantilever) 20' Guide Space
A1294 - 403 1 pc. Lid Form Shape Kit (Inclined) 20' Guide Space
A1498 - Lid Forming Perimeter Encapsulation & Brackets w/Gunite Encapsulation to 24' (Consumables)
A1419 - Lid Forming Perimeter Encapsulation & Brackets For Variable Lid Thickness (Consumable)
A1125 - Lid Forming Perimeter Encapsulation & Brackets use w/Bead Encapsulation (Consumable)
A1968 - Lid Forming Perimeter Encapsulation & Brackets For Variable Lid Thickness VL (Consumable)
A1367 – 1 Pcs Box Perimeter & Lid Forming 4ft. Extension Gunite
A1368 – P Pcs Box Perimeter & Lid Forming 4ft Extension V/L

Torque Limiter

A0127 – CS1800-CS3000 Torque
W/Housing Complete

A0126 – CS1800 –CS3000 Torque
Limiter Housing (Assembly to Left)

A0180 –CS1800-CS3000 Torque Limiter
Assembly (right part of picture)



M0331 CS1800-CS3000 Torque Limiter Clutch Hub

A1938 – Eclipse Torque Limiter Complete.

A0017 – CS3000 Caliper style torque limiter (after 5/2013)

Misc Parts

A1688 – UG Leading Edge Insert (Set)

A0439 – Ft Wayne LE Insert (Set)

M9798 – LE Insert TG for Pivoting

M3913 – LE Insert TG Fixed Position

H1034 – Wheel for Wheel Assembly

H9668 – Spacer for Wheel Assembly

H9667 – Bolt for Wheel Assembly

H0176 – Nut for Wheel Assembly Bolt

H0334 – TG Track Screw

H0324 #12 Blue track Anchor

X0656 – Top Guide Track

X0820 – Under Guide Track

A2896 – Flush Lid Lock

RA2023 – Motor bracket to put CS Motor on Pool Saver System

A0283 – CP II Motor Adaptor Plate W/Hardware (adapts CS Motor to CP)